



The Original Creole Orchestra was one of the first New Orleans jazz bands to tour the North.



Cornet belonging to jazz musician Jimmy McPartland, a member of the Austin High Gang band, c. 1929.



Migrant family, c. 1920.



The shipping room of the Nile Queen Corporation.



National guardsmen question an African American man during the 1919 race riot.



Members of the Olivet Baptist Church, c. 1925.

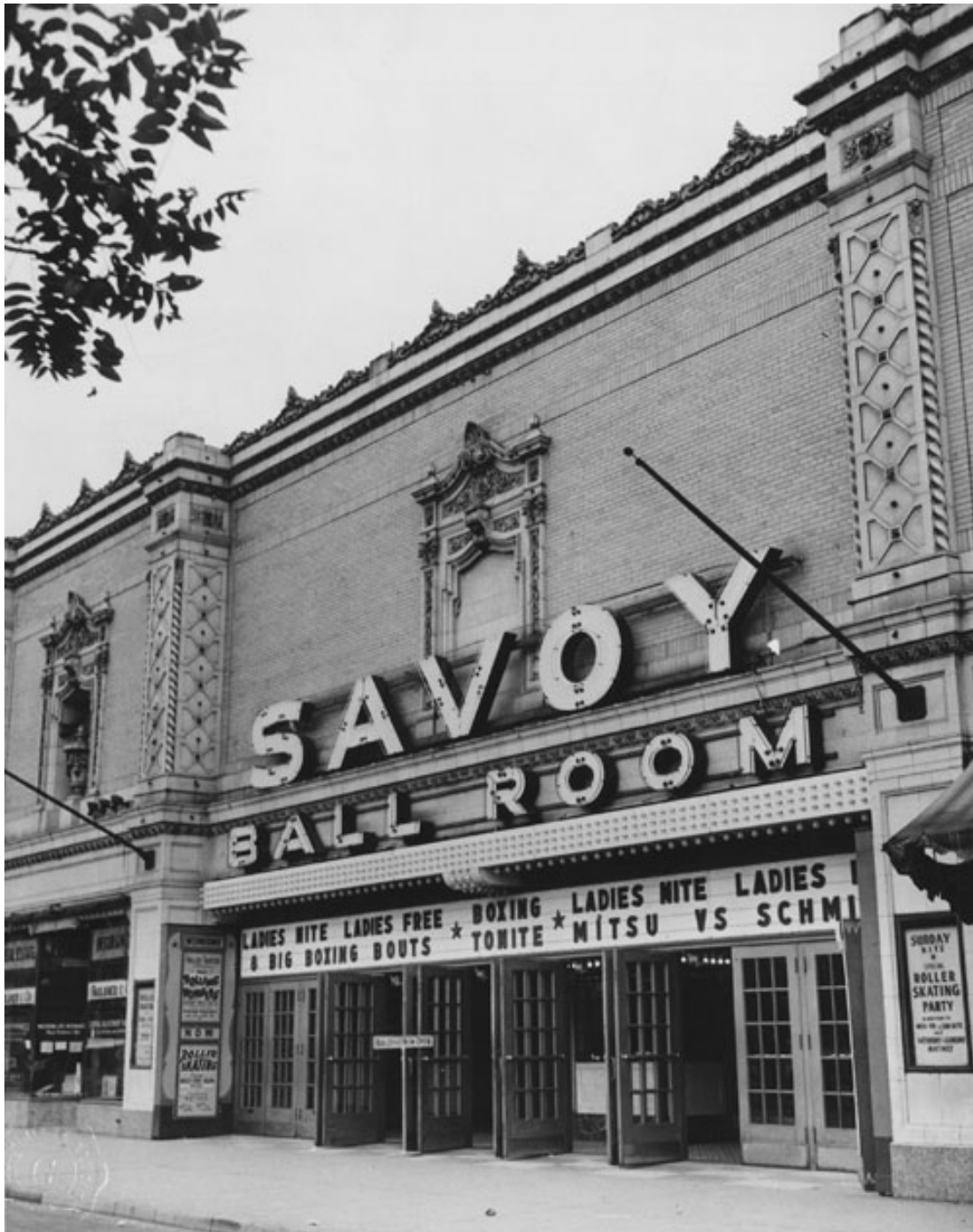


Clubgoers on the Stroll.



HOMES OWNED BY NEGROES ON SOUTH PARK AVENUE
Classified in text as "Type A"

Homes on South Park Avenue (now Dr. Martin Luther King Jr. Drive), c. 1925.



The Savoy Ballroom (seen c. 1941) was one of the popular clubs of the post-Stroll era.



Louis Armstrong, c. 1930.